



**MODEL: RHBU2
PRESSURE SENSOR**

4

3

2

1

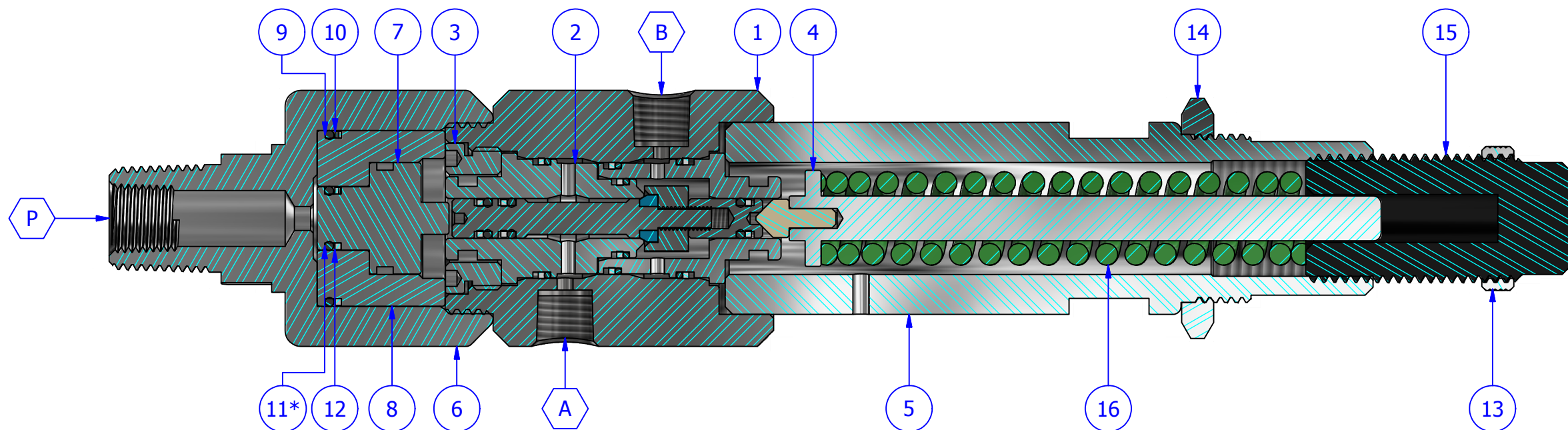
OVERVIEW / OPERATION

THE BWB "RHBU2" IS A 2 WAY, NORMALLY OPEN OR NORMALLY CLOSED, AUTOMATIC, HYDRAULIC, PRESSURE SENSING DEVICE. BY CHOOSING THE APPROPRIATE INLET, THE SENSOR CAN DETECT PRESSURE ABOVE (PSH) OR BELOW (PSL) ANY DESIRED PRESSURE SETTING. BY SELECTING THE CORRECT PISTON ASSEMBLY & SPRING COMBINATION (SEE PRESSURE CHART), AND EITHER LOOSENING OR TIGHTENING THE ADJUSTMENT BOLT, THE SENSOR MAY BE SET BETWEEN 50 AND 10,000 PSI. IT IS NORMALLY INSTALLED ON A PROCESS VESSEL, PROCESS FLOW LINE, OR IN A CONTROL PANEL. THE SENSOR RECEIVES SENSING PRESSURE (PORT P) FROM THE COMPONENT WHICH IT IS MONITORING AND HYDRAULIC SUPPLY PRESSURE (PORT A OR B) FROM THE SAFETY SYSTEM WHICH IT WILL SHUTDOWN.

FEATURES

- DRY FILM LUBRICANT APPLIED TO THREADS TO INCREASE THE LOAD-BEARING CAPABILITIES; THUS REDUCING THE CHANCE OF GALLING WHILE STILL MAINTAINING AN EXTREMELY LOW COEFFICIENT OF FRICTION.
- DEADBAND IS VARIABLE DEPENDING ON INSTRUMENT MEDIATYPE AND PRESSURE APPLIED
- SET POINT REPEATABILITY 1% OF SET PRESSURE
- EXOTIC MATERIAL AVAILABLE UPON REQUEST
- VITON SEALS STANDARD
- OTHER ELASTOMERS AVAILABLE UPON REQUEST
- WEIGHT : 5.25 LBS.

PARTS LIST		
ITEM	QTY	DESCRIPTION
1	1	BODY, LOWER
2	1	ASSEMBLY, CARTRIDGE (SEE FIGURE 2)
3	1	CAP, RETAINER
4	1	SPRING GUIDE
5	1	BODY, UPPER
6	1	BASE, SENSING
7	1	PISTON, SENSING
8	1	SLEEVE, SENSING
9	1	O-RING
10	1	O-RING BACKUP
11*	1	O-RING
12	1	O-RING BACKUP
13	1	LOCK NUT, ADJUSTMENT
14	1	PANEL NUT
15	1	ADJUSTMENT BOLT
16	1	SPRING



CONNECTIONS:
 PORT A
 PSL SUPPLY PRESSURE INLET
 PSH OUTLET
 30 - 6,000 PSI (2.06 - 413.69 bar)

PORT B
 PSH SUPPLY PRESSURE INLET
 PSL OUTLET
 30 - 6,000 PSI (2.06 - 413.69 bar)

PORT P
 SENSING PRESSURE INLET
 50 -10,000 PSI (3.45- 689.48 bar)

NOTE:
 (*) SEE PISTON/SPRING CHARTS FOR SPECIFIC PISTON AND O-RING CONFIGURATIONS

REPAIR KITS CONTAIN ALL SEALS TO FIT ANY CONFIGURATION

TITLE	
ASSEMBLY, 3-2 RHBU2 PRESSURE SENSOR	
DWG NO	REV
SM-025 FIGURE 1	0
SCALE	SHEET 1 OF 1
DRAWING NOT TO SCALE	

HOUMA, LA

4

3

2

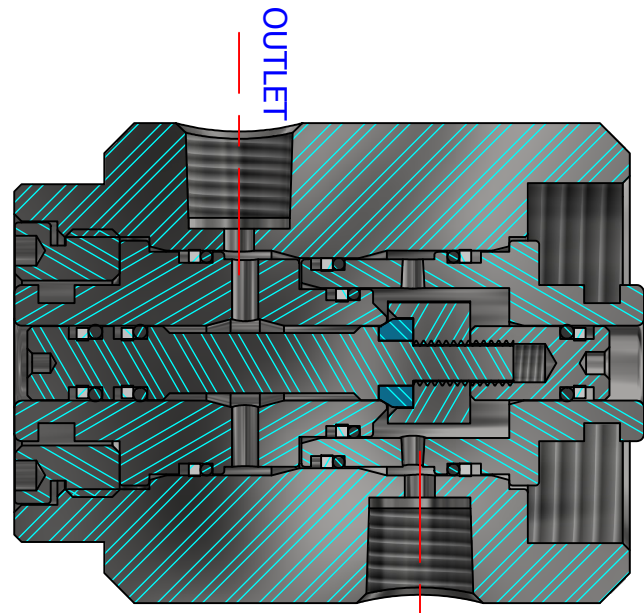
1

4

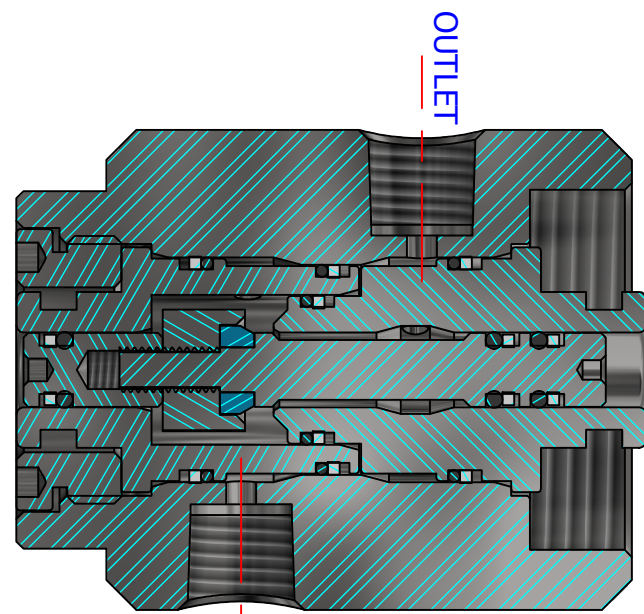
3

2

1

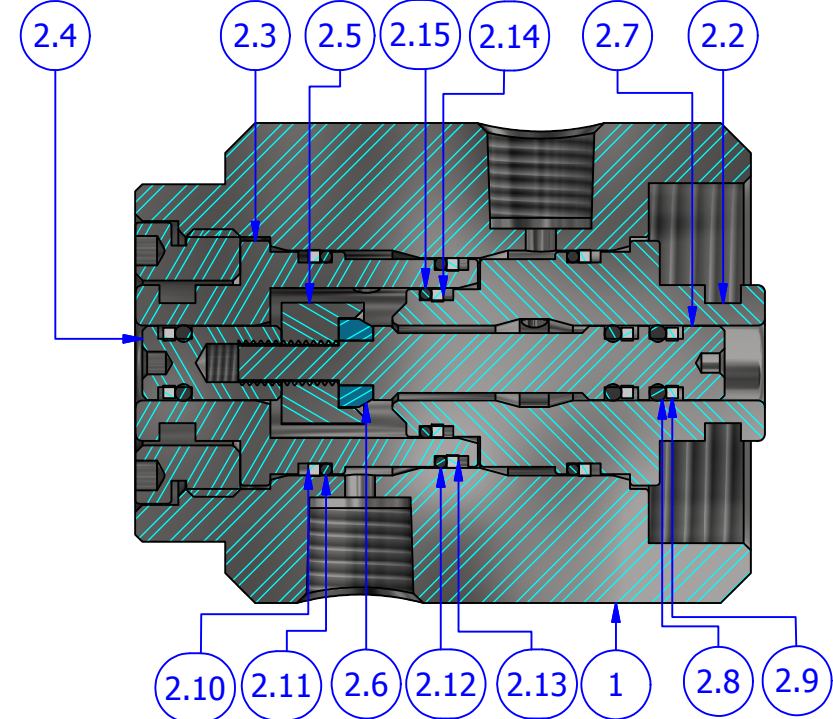



HIGH CONFIGURATION



LOW CONFIGURATION

PARTS LIST		
ITEM	QTY	DESCRIPTION
1	1	BODY, LOWER
2.2	1	SLEEVE, UPPER
2.3	1	SLEEVE, LOWER
2.4	1	PISTON, UPPER
2.5	1	RETAINER, SEAL
2.6	1	SEAL
2.7	1	PISTON, LOWER
2.8	3	O-RING
2.9	3	O-RING BACKUP
2.10	2	O-RING BACKUP
2.11	2	O-RING
2.12	1	O-RING
2.13	1	O-RING BACKUP
2.14	1	O-RING BACKUP
2.15	1	O-RING





TITLE	
HIGH-LOW DETAIL, RHBU2	
DWG NO	REV
SM-025 FIGURE 2	0
SCALE	SHEET 1 OF 1
DRAWING NOT TO SCALE	

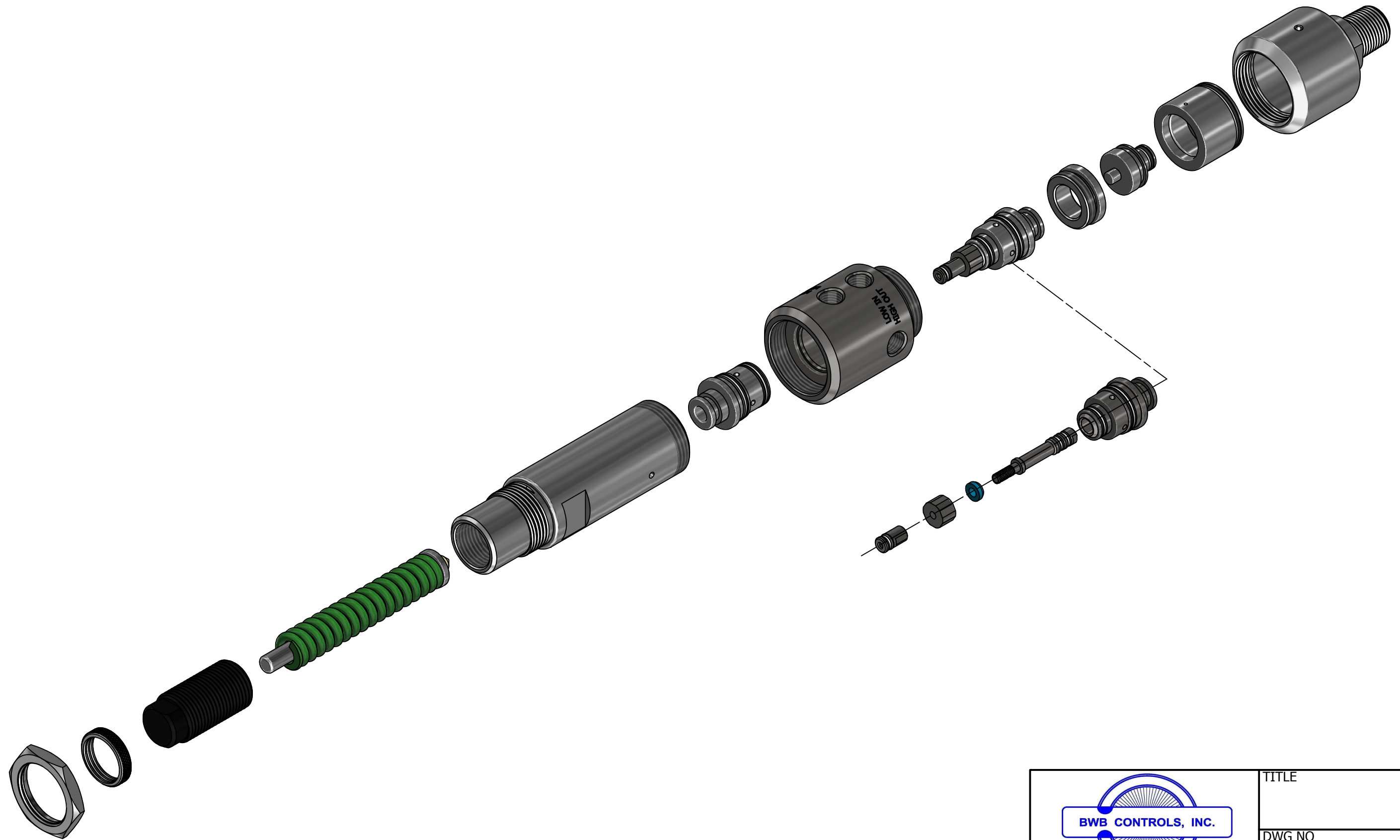
4


3

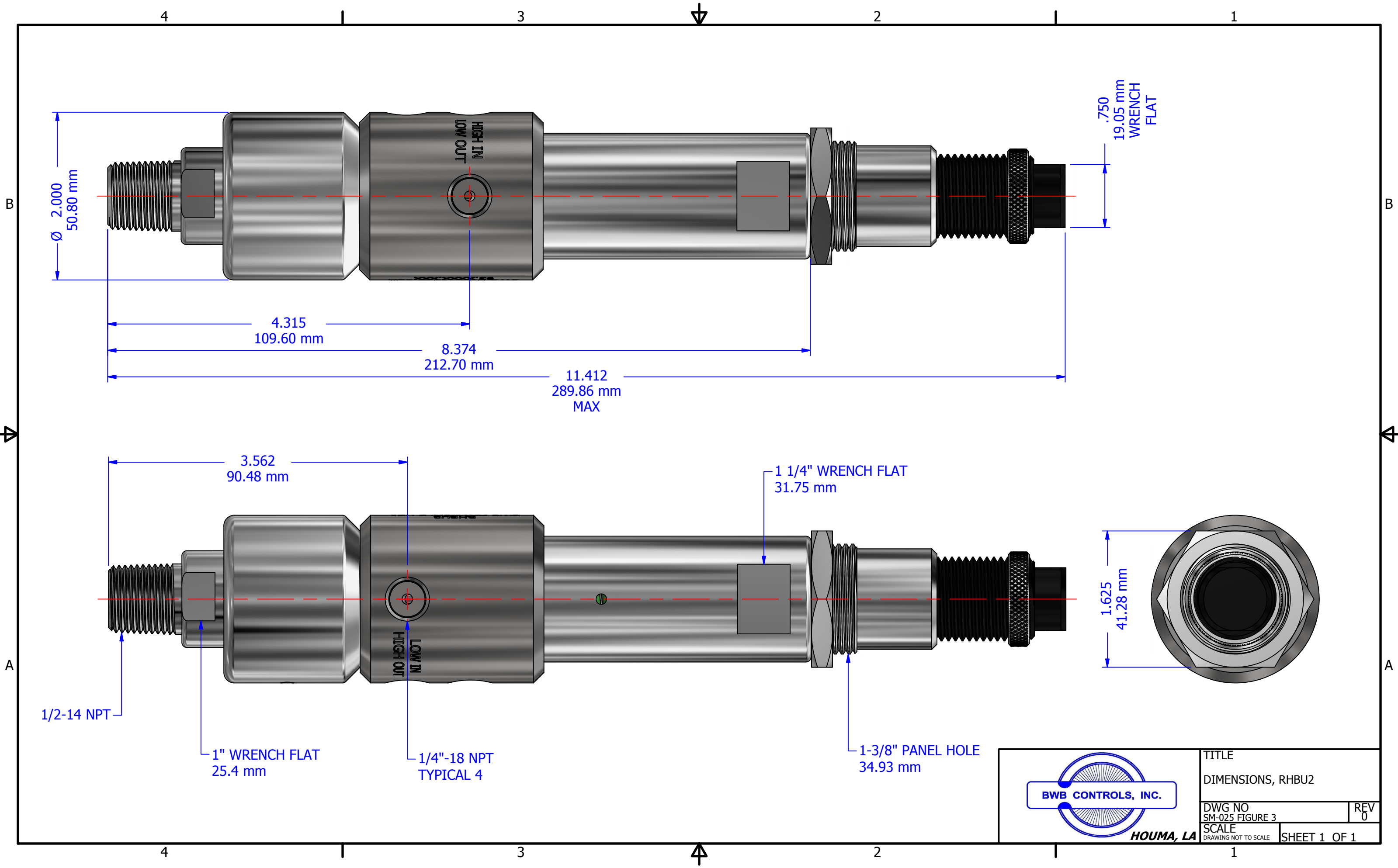
2


1

HOUMA, LA



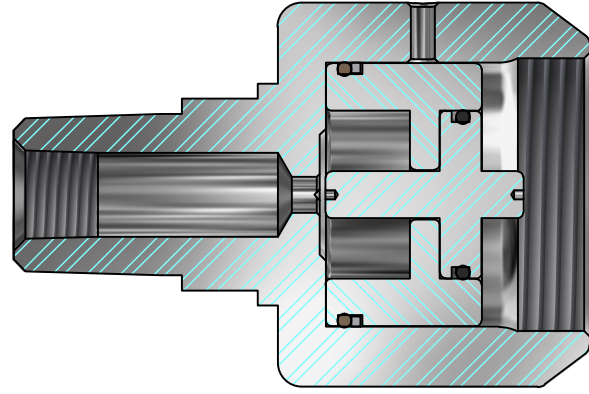
 <p>BWB CONTROLS, INC. HOUMA, LA</p>	TITLE	
	DWG NO Assembly, RHBU Rev 052318	REV
	SCALE DRAWING NOT TO SCALE	SHEET 1 OF 1



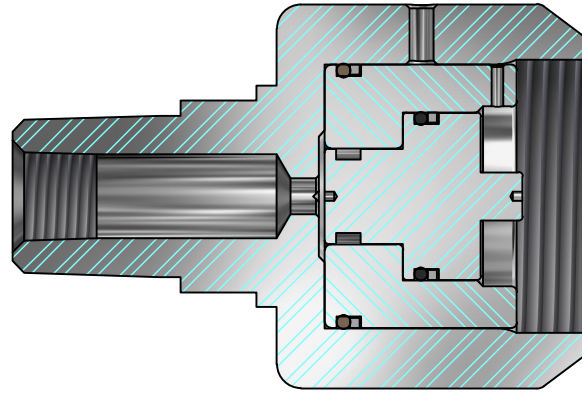
		TITLE	
		DIMENSIONS, RHBU2	
DWG NO		REV	
SM-025 FIGURE 3		0	
SCALE		SHEET 1 OF 1	
DRAWING NOT TO SCALE			

NOTE:
 BWB CONTROLS "R" PRESSURE SENSORS CAN BE CONFIGURED TO MEET THE CUSTOMERS NEEDS BY SELECTING THE APPROPRIATE PISTON AND SPRING COMBINATION. PLEASE REVIEW THE CHARTS LISTED BELOW TO DETERMINE WHICH CONFIGURATION IS REQUIRED.

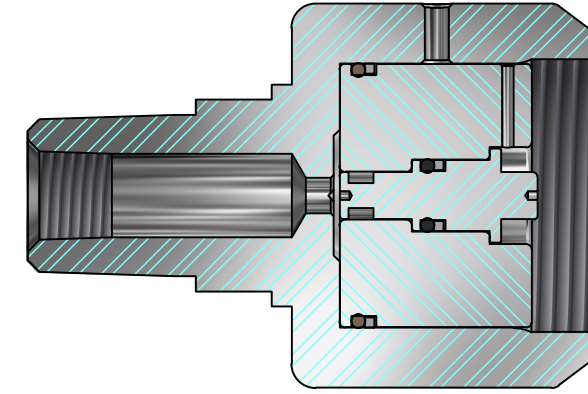
**NEVER INSTALL MORE THAN ONE ORING ON THE SENSING PISTONS AT ONE TIME.



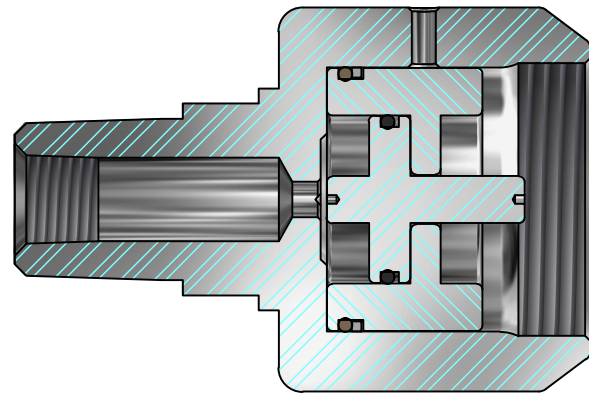
#1/2 PISTON CONFIGURATION		
SPRING	RANGE (PSI)	RANGE (BAR)
RED	15 - 50	1.02 - 3.45
GREEN	50 - 200	3.45 - 13
YELLOW	150 - 325	10 - 22



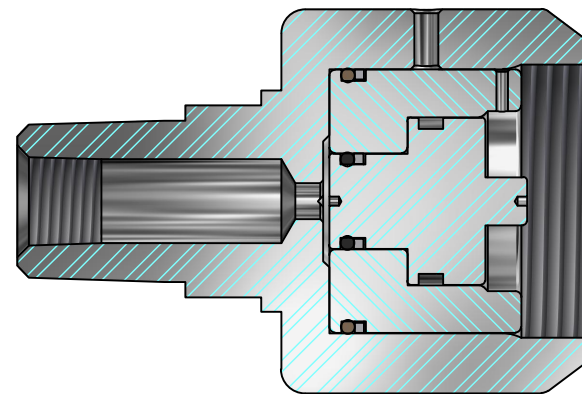
#2/3 PISTON CONFIGURATION		
SPRING	RANGE (PSI)	RANGE (BAR)
GREEN	150 - 500	10 - 34
YELLOW	300 - 900	20 - 62



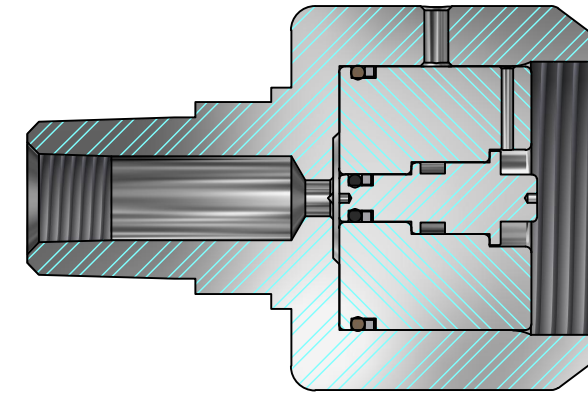
#4/5 PISTON CONFIGURATION		
SPRING	RANGE (PSI)	RANGE (BAR)
GREEN	1,000 - 3,000	69 - 207
YELLOW	1,500 - 4,000	103 - 275



#2/1 PISTON CONFIGURATION		
SPRING	RANGE (PSI)	RANGE (BAR)
GREEN	150 - 500	10 - 34
YELLOW	300 - 900	20 - 62



#3/2 PISTON CONFIGURATION		
SPRING	RANGE (PSI)	RANGE (BAR)
GREEN	500 - 1,500	34 - 103
YELLOW	750 - 2,000	52 - 138



#5/4 PISTON CONFIGURATION		
SPRING	RANGE (PSI)	RANGE (BAR)
GREEN	3,000 - 6,000	207 - 413
YELLOW	3,500 - 10,000	241 - 690



TITLE	
SENSING ASSEMBLIES, RHBU2	
DWG NO	REV
SM-024	2
SCALE	SHEET 1 OF 1
DRAWING NOT TO SCALE	